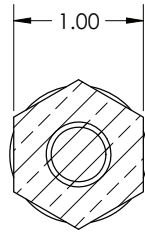
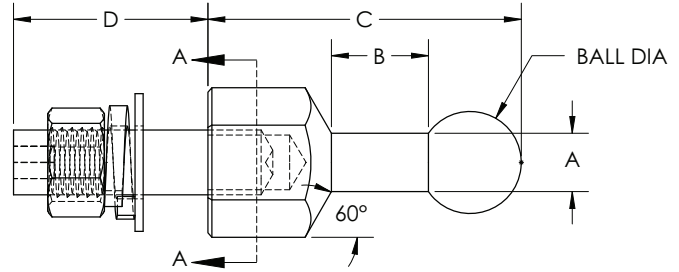




Utility Grounding Division



SECTION A-A



TRAVIS PATTERN 20MM DIA TIN PLATED COPPER BALL STUDS,  
WITH STAINLESS HARDWARE

PART NUMBER	BALL DIA	DIMENSIONS (INCHES)				THREAD SIZE	RATING
		A	B	C	D		
BS20T-050	20mm	.45"	.75"	2.42"	1/2"	1/2-13"	40.5 kA @ 17.25 CYCLES
BS20T-075					3/4"		
BS20T-100					1"		
BS20T-125					1-1/4"		
BS20T-150					1-1/2"		
BS20T-200					2"		
BS20T-225					2-1/4"		
BS20T-250					2-1/2"		
BS20T-300					3"		
BS20T-325					3-1/4"		
BS20T-350					3-1/2"		
BS20T-400					4"		
BS20T-425					4-1/4"		
BS20T-450					4-1/2"		
BS20T-500					5"		
BS20T-650					6-1/2"		

MADE IN THE USA 