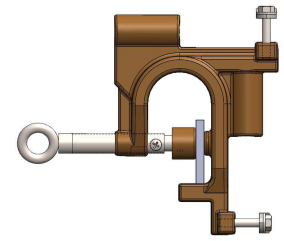


ANGLE BAR



2" TO 3" FLAT BAR

TRAVIS PATTERN 3X3 BRONZE ANGLE CLAMP  
W/ STRAIN RELIEF

|             |                            |                               |
|-------------|----------------------------|-------------------------------|
| PART NUMBER | TP3X3BAT-SR                |                               |
| TYPE        | ANGLE CLAMP                |                               |
| MATERIAL    | 875                        |                               |
| SIZE        | 3"                         |                               |
| RANGE       | 1-1/2" X 1-1/2" TO 3" X 3" |                               |
| RATING      | SINGLE                     | 6H, 55 kA @ 15 CYCLES, X/R=30 |
|             | DOUBLE                     | 85 kA @ 15 CYCLES, X/R=30     |
|             | *TRIPLE                    | 105 kA @ 15 CYCLES, X/R=30    |
| SCREW TYPE  | STAINLESS STEEL T SCREW    |                               |
| SCREW SIZE  | 5/8-8 STUB ACME            |                               |
| MAX TORQUE  | 400 IN/LBS.                |                               |
| TAP STYLE   | DIRECT THREAD              |                               |
| TAP SIZE    | 5/8-11                     |                               |
| JAW TYPE    | SMOOTH                     |                               |

\*IMPLICATION OF EMPIRICAL DATA FROM TEST LAB

(NOTE) PARALLEL RATINGS ASSUME INSIDE SPACING BETWEEN CLAMPS LESS THAN OR EQUAL TO 3 INCHES (TOUCHING IF POSSIBLE)

MADE IN THE USA 